



# AMANA

YOUR TRUST OUR TOP PRIORITY

## Premium Hardware Solutions

Soft Close | Drawer Systems | Hinges | Accessories

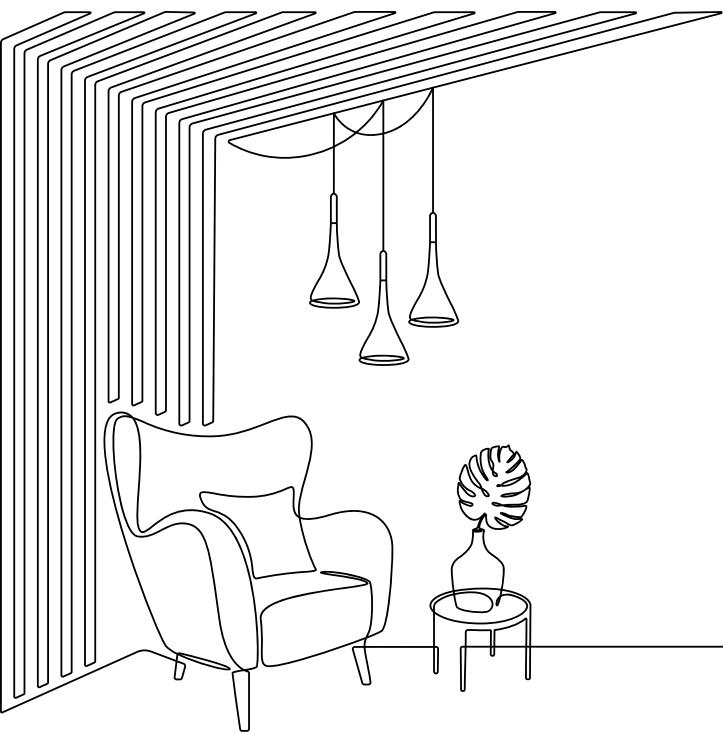
By Ashoka Group

# ABOUT US

**Amana Hardware, established in 2025**, is a rising name in the world of premium kitchen, wardrobe and door hardware solutions. Built on the values of quality, trust, and innovation, our mission is to deliver hardware products that offer long-lasting performance and modern design.

**We are committed to providing German Quality Standards across our complete product range**—including kitchen fittings, drawer systems, hinges, telescopic channels, door closers, wardrobe fittings and accessories. Every Amana product is designed to ensure strength, smooth functionality, and durability for everyday use.

With a strong dealer network, carpenter-focused reward programs, and continuous product upgrades, Amana Hardware aims to become one of India's most reliable hardware brands.



Our promise is simple -  
Premium Hardware. Reliable  
Performance.

Your Trust, Our Top Priority.

Hydraulic Hinges **1-3**

---

Slim Box **5**

---

Drawer Accessories **7-8**

---

Kitchen Accessories **9-14**

---

Pantry **15-18**

---

BOTTLE PULLOUT ( Side Mounted) **19**

---

Corner Solution **20**

---

Cabinet Fittings **21**

---

Bed Fittings **23**

---

Telescopic channel **25-26**

---

Door accessories **28**

---

Door Closer **29**

---

Alumunium Profiles **31-32**

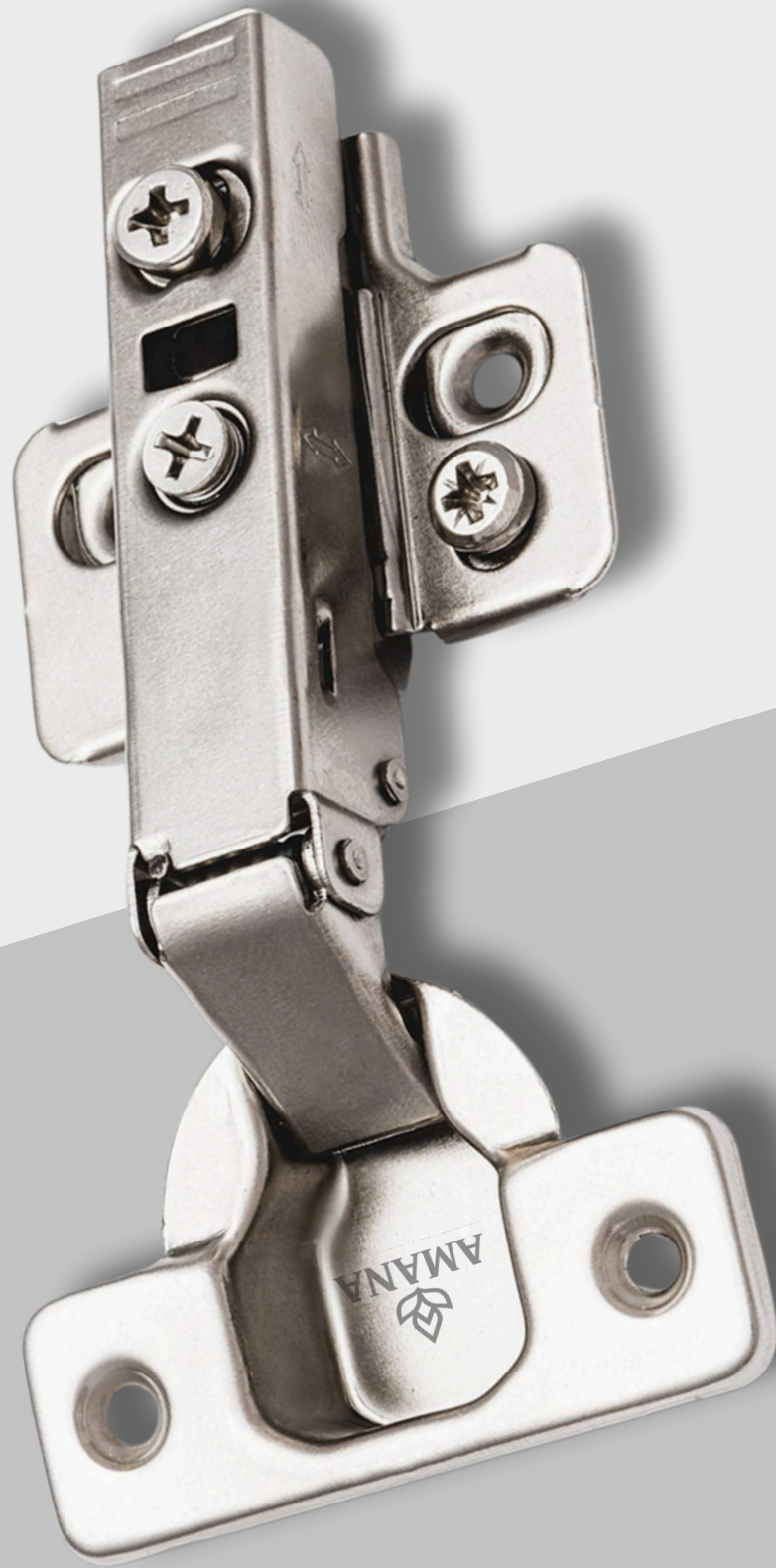
---

WARDROBE FITTING **34-43**

---

THE  
FUTURE  
OF  
INTERIOR  
HARDWARE.





# HINGES



## 3D Hinge

CODE	OVERLAY	MRP (₹)	QUANTITY
AH01	Full	335/-	50 Set/Box
AH02	Half	345/-	50 Set/Box
AH03	Insert	355/-	50 Set/Box

### Product Features

- 5-Hole Mounting Plate
- Easy Installation & Fine Adjustment
- Smooth & Silent Operation



## Black 3D Hinge

CODE	OVERLAY	MRP (₹)	QUANTITY
AH04	Full	365/-	50 Set/Box
AH05	Half	375/-	50 Set/Box
AH06	Insert	385/-	50 Set/Box

### Product Features

- 5 Hole Mounting Plate
- Premium Black Finish – rust resistant & long-lasting
- Strong Look. Strong Performance.



## SS 3D Hinge

CODE	OVERLAY	MRP (₹)	QUANTITY
AH07	Full	395/-	50 Set/Box
AH08	Half	405/-	50 Set/Box
AH09	Insert	415/-	50 Set/Box

### Product Features

- Heavy Duty Performance for long-term use
- 5 Hole Mounting Plate - extra strength & better load support
- SS Finish for Lasting Performance



## 165° Soft Close Hinge With 3D Plate

CODE	MRP (₹)	QUANTITY
<b>AH10</b>	<b>740/-</b>	<b>25 Set/Box</b>

### Product Features

- 3D Adjustable Plate - height, depth & side adjustment
- Designed for Corner Perfection
- Soft Close Mechanism - silent & controlled closing



## 135° Pie Hinge

CODE	MRP (₹)	QUANTITY
<b>AH11</b>	<b>260/-</b>	<b>50 Set/Box</b>

### Product Features

- Perfect Fit for Corner Cabinets
- Wide Opening. Strong Support.
- Perfect Alignment & Firm Grip



## 90° Blind Hinge With 3D Plate

CODE	MRP (₹)	QUANTITY
<b>AH12</b>	<b>495/-</b>	<b>50 Set/Box</b>

### Product Features

- Clean & concealed fitting for modern look
- Accurate fitting with 3D adjustment
- Strong and stable Door support



# KITCHEN

# SLIM BOX



## SLIM TANDEM BOX

FINISH AVAILABLE : GREY

CODE	SIZE	MRP (₹)	QUANTITY
<b>ASB01</b>	<b>86 MM</b>	<b>2580/-</b>	<b>6 SET/BOX</b>
<b>ASB02</b>	<b>116 MM</b>	<b>2900/-</b>	<b>6 SET/BOX</b>
<b>ASB03</b>	<b>166 MM</b>	<b>3220/-</b>	<b>4 SET/BOX</b>
<b>ASB04</b>	<b>196 MM</b>	<b>3540/-</b>	<b>4 SET/BOX</b>

### Product Features

- Smooth & silent soft close mechanism
- Ultra-slim side walls for maximum storage space
- Stable & wobble-free performance
- Elegant matte finish for modern kitchens



# AMANA

YOUR TRUST OUR TOP PRIORITY

GERMAN QUALITY  
HARDWARE



# DRAWER ACCESSORIES

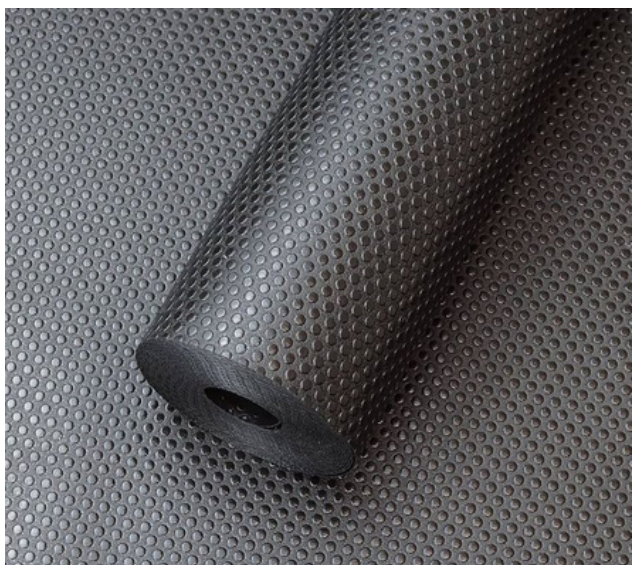


## Wooden cutlery

CODE	SIZE	FINISH	MRP (₹)
<b>AWCO1</b>			

### Product Features

- High quality natural wood material
- Eco-friendly & hygienic storage
- Elegant wooden look for premium kitchens
- Smooth & finely finished surface



## Anti Skid Mat Grey

CODE	SIZE	FINISH	MRP (₹)
<b>ASMO1</b>			

### Product Features

- High quality rubber / PVC material
- Suitable for drawers, shelves & cabinets
- Cut-to-size flexibility
- Anti-slip textured surface



## New PVC Cutlery

CODE	SIZE	MRP (₹)	QUANTITY
<b>APC01</b>	<b>450 MM</b>	<b>960 /-</b>	<b>10 Pcs/Box</b>
<b>APC02</b>	<b>500 MM</b>	<b>1040 /-</b>	<b>10 Pcs/Box</b>
<b>APC03</b>	<b>600 MM</b>	<b>1220 /-</b>	<b>10 Pcs/Box</b>
<b>APC04</b>	<b>700 MM</b>	<b>1480 /-</b>	<b>10 Pcs/Box</b>
<b>APC05</b>	<b>800 MM</b>	<b>1740 /-</b>	<b>10 Pcs/Box</b>
<b>APC06</b>	<b>900 MM</b>	<b>2000 /-</b>	<b>10 Pcs/Box</b>

### Product Features

- High quality food-grade plastic material
- Smooth finish & rounded edges
- Easy to clean & hygienic
- Lightweight yet strong design

# DRAWER ACCESSORIES



## Fitment Cupsaucer

CODE	MRP (₹)	QUANTITY
<b>AF01</b>	<b>880 /-</b>	<b>4 Pcs / Box</b>



## Fitment Plate

CODE	MRP (₹)	QUANTITY
<b>AF02</b>	<b>915 /-</b>	<b>4 Pcs / Box</b>



## Fitment Thali

CODE	MRP (₹)	QUANTITY
<b>AF03</b>	<b>945/-</b>	<b>4 Pcs / Box</b>

### Product Features

- Easy to clean & maintain
- Smooth edges for safe handling
- Anti-slip base for better stability
- High quality stainless steel frame



## Imported Wicker Basket

CODE	SIZE	MRP (₹)	QUANTITY
<b>AWB01</b>	<b>450 MM</b>	<b>4320 /-</b>	<b>1 Pcs/Box</b>
<b>AWB02</b>	<b>600 MM</b>	<b>4860 /-</b>	<b>1 Pcs/Box</b>

### Product Features

- High quality woven wicker material
- Proper air circulation to keep vegetables fresh
- Strong wooden support frame
- Easy access & organized storage



## Dish Rack

CODE	SIZE	MRP (₹)	QUANTITY
<b>ADR01</b>	<b>600 MM</b>	<b>1710 /-</b>	<b>5 Pcs/Box</b>
<b>ADR02</b>	<b>700 MM</b>	<b>2060 /-</b>	<b>5 Pcs/Box</b>
<b>ADR03</b>	<b>800 MM</b>	<b>2340 /-</b>	<b>5 Pcs/Box</b>
<b>ADR04</b>	<b>900 MM</b>	<b>2620 /-</b>	<b>5 Pcs/Box</b>



### Product Features

- Premium Grade Stainless Steel
- Rust & Corrosion Resistant Finish
- High Load Bearing Capacity
- Perfect Alignment for Plates & Bowls



## Auto Lid Bin

CODE	SIZE	MRP (₹)	QUANTITY
<b>AD01</b>	<b>8 L</b>	<b>3330 /-</b>	<b>1 Pcs / Box</b>
<b>AD02</b>	<b>14 L</b>	<b>3730 /-</b>	<b>1 Pcs / Box</b>

### Product Features

- High quality stainless steel bin
- Easy open & close operation
- Easy to remove & clean bin
- Space saving cabinet fitment



## Sliding Waste Bin 22 Ltr.

CODE	MRP (₹)	QUANTITY
<b>AD03</b>	<b>7760 /-</b>	<b>1 Pcs / Box</b>

### Product Features

- Double Bucket Garbage Bin
- Smooth pull-out sliding mechanism
- Strong metal frame with durable bins
- Ideal for modern modular kitchens



## Air Vent Plate

CODE	SIZE	FINISH	MRP (₹)	QUANTITY
<b>AAV01</b>	<b>150 MM</b>	<b>Black</b>		
<b>AAV02</b>	<b>200 MM</b>	<b>Black</b>		
<b>AAV03</b>	<b>250 MM</b>	<b>Black</b>		

CODE	SIZE	FINISH	MRP (₹)	QUANTITY
<b>AAV04</b>	<b>150 MM</b>	<b>Silver</b>		
<b>AAV05</b>	<b>200 MM</b>	<b>Silver</b>		
<b>AAV06</b>	<b>250 MM</b>	<b>Silver</b>		

### Product Features

- Optimized airflow design
- Helps in heat & moisture release
- Suitable for kitchen cabinets & appliances
- High quality powder coated finish



## GLASS ELEVATOR (PULL DOWN)

CODE	SIZE	MRP (₹)	QUANTITY

### Product Features

- Smooth & controlled movement
- Premium glass basket with strong frame
- High Quality Metal Structure
- Long Lasting smooth mechanism



## HANGING PENDANT

CODE	SIZE	MRP (₹)	QUANTITY
	<b>900 MM</b>		
	<b>1200 MM</b>		

### Product Features

- Strong Metal Construction
- Maximum Space Utilization
- Premium Finish for Modern Kitchens



**GLASS ROLLING SHUTTER**

CODE	SIZE	COLOR	MRP (₹)	QUANTITY
	<b>600 MM</b>	<b>WHITE</b>		<b>1 SET</b>



**GLASS ROLLING SHUTTER**

CODE	SIZE	COLOR	MRP (₹)	QUANTITY
	<b>600 MM</b>	<b>BLACK</b>		<b>1 SET</b>

**Product Features**

- Smooth and silent rolling mechanism
- Easy operation & maintenance



**PVC ROLLING SHUTTER**

CODE	SIZE	COLOR	MRP (₹)	QUANTITY
	<b>450 MM</b>	<b>WHITE</b>		<b>1 SET</b>
	<b>600 MM</b>	<b>WHITE</b>		<b>1 SET</b>



**PVC ROLLING SHUTTER**

CODE	SIZE	COLOR	MRP (₹)	
	<b>450 MM</b>	<b>BLACK</b>		
	<b>600 MM</b>	<b>BLACK</b>		

**Product Features**

- High quality PVC material
- Water & moisture resistant

# LINEA SERIES PANTRY



## Product Features

- 6 Shelf
- Wooden + Flatline Grey Coated
- Soft Close
- Adjustable shelves for bottles & groceries
- Heavy-duty frame with smooth sliding

CODE	SIZE	FINISH	MRP (₹)

# VERTEX SERIES PANTRY



## Product Features

- 6 Shelf Grey Color
- Pure Aluminium Body Curve Design
- With Anti-Skid Mat
- Soft Close
- High side walls to prevent items from falling
- Full-height pull-out mechanism

CODE	SIZE	FINISH	MRP (₹)
	<b>450 MM</b>		
	<b>600 MM</b>		

# SIERRA SERIES PANTRY



## Product Features

- 6 Shelf
- Stainless Steel Basket With Ss Base
- Soft Close
- Integrated High Guard Rails To Secure Bottles, Jars, And Packaged Goods
- High Load-Bearing Structure Crafted For Long-Term Performance

CODE	SIZE	FINISH	MRP (₹)

# AXTON SERIES PANTRY



## Product Features

- 6 Shelf
- Temper Glass With Aluminium Strip
- With Anti-Skid Mat
- Soft Close
- Perfectly Balanced Motion even under full load
- Ultra-Smooth, Silent Performance Technology

CODE	SIZE	FINISH	MRP (₹)

# BOTTLE PULLOUT ( SIDE MOUNTED)

## LINEA SERIES

CODE	SIZE	MRP (₹)	QUANTITY

### Product Features

- Wooden + Flatline Coated
- Grey Color
- Side Mounting Soft Close
- High Side Safety Rails to secure bottles, jars & containers
- Ventilated Mesh Base for airflow and hygiene



## VERTEX SERIES

CODE	SIZE	MRP (₹)	QUANTITY

### Product Features

- Pure Aluminium Body Curve Design
- Grey Color
- Side Mounting Soft Close
- Full Extension Pull-Out Mechanism for complete visibility and easy access
- Anti-Slip Base Mat to prevent movement of stored items



## AXTON SERIES

CODE	SIZE	MRP (₹)	QUANTITY

### Product Features

- Soft Close With Bidding
- Side Mounting
- Grey Color
- Minimalist Matte Finish that complements modern interiors
- Precision Glide Technology for ultra-smooth movement





## SCARAUSEL LINEA SERIES

CODE	DIRECTION	FINISH	MRP (₹)

### Product Features

- Smooth & silent pull-out movement
- Heavy-duty structure for utensils & cookware
- Separate shelves for plates and pots
- Premium finish for modern modular kitchens



## SCARAUSEL VERTEX SERIES

CODE	DIRECTION	FINISH	MRP (₹)

### Product Features

- Smart S-shape pull-out design
- Full extension for easy access
- Strong & durable construction
- Smooth and silent operation



## Cabinet Gas Spring

CODE	CAPACITY	MRP (₹)	QUANTITY
<b>AGS01</b>	<b>5 KG</b>	<b>280 /-</b>	<b>50 Set</b>
<b>AGS02</b>	<b>10 KG</b>	<b>290 /-</b>	<b>50 Set</b>
<b>AGS03</b>	<b>15 KG</b>	<b>300 /-</b>	<b>50 Set</b>
<b>AGS04</b>	<b>20 KG</b>	<b>310 /-</b>	<b>50 Set</b>
<b>AGS05</b>	<b>25 KG</b>	<b>320 /-</b>	<b>50 Set</b>

### Product Features

- Premium Build Quality
- Corrosion Resistant Body
- Tested for Long Cycle Life
- Heavy Duty Internal Spring



## Soft Close Gas Spring

CODE	CAPACITY	MRP (₹)	QUANTITY

### Product Features

- High Quality Hydraulic Damper
- Noise Free Operation
- Easy to Install
- Durable & Long Lasting Performance



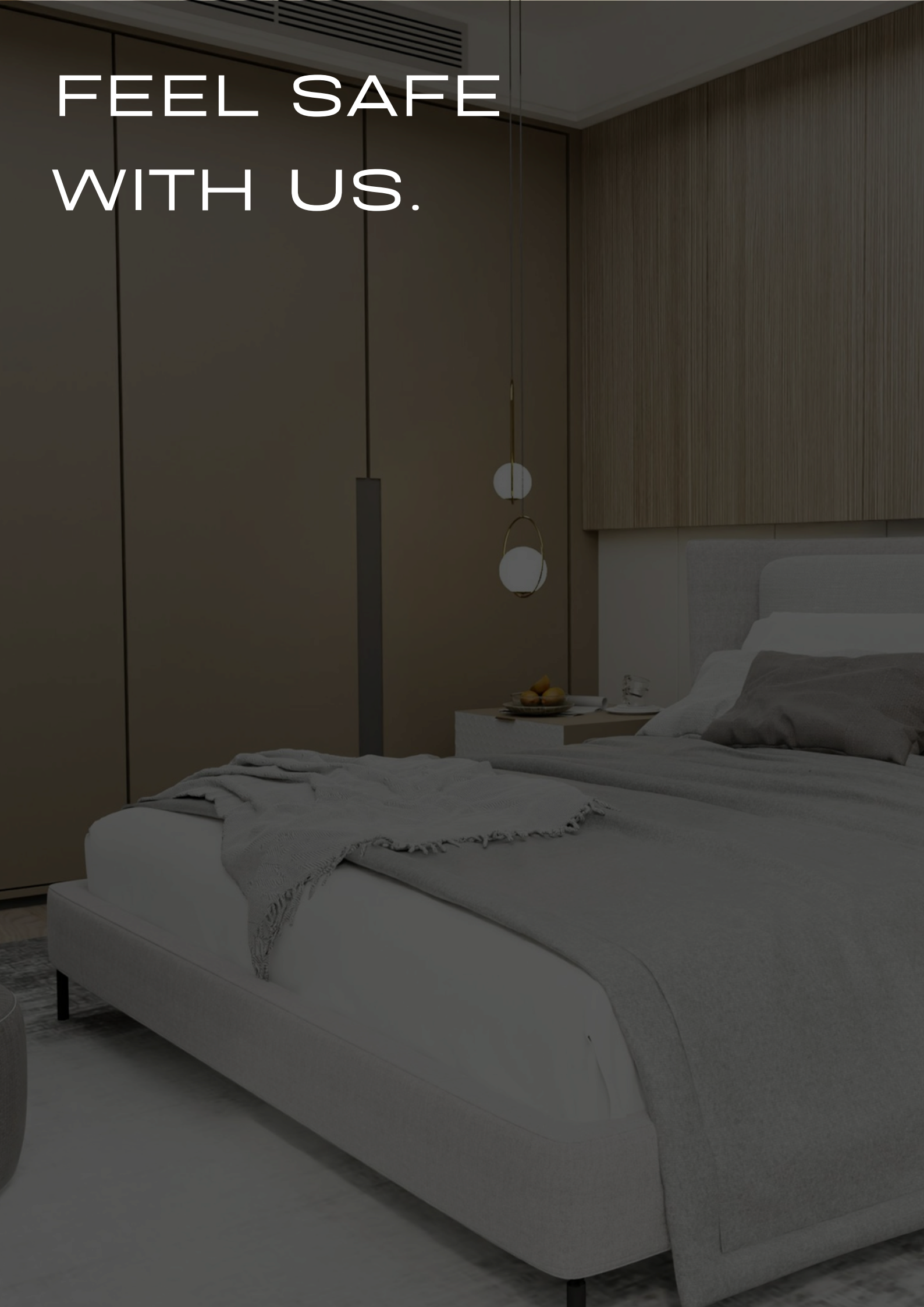
## Push To Open

CODE	CAPACITY	MRP (₹)	QUANTITY

### Product Features

- Improves door life & hinge performance
- High quality internal damping mechanism
- Tested for repeated usage
- Compatible with most cabinet doors

FEEL SAFE  
WITH US.



# BED FITTINGS



## Bed Frame ( Without Gas Spring )



CODE	CAPACITY	MRP (₹)	QUANTITY

### Product Features

- Suitable for wooden & metal beds
- Smooth hydraulic lift mechanism
- Heavy load support for mattress & storage
- Rust & wear resistant finish

## Gas Spring ( For Install With Bed Frame )



CODE	CAPACITY	MRP (₹)	QUANTITY

## Gas Spring ( For Use Without Frame )



CODE	CAPACITY	MRP (₹)	QUANTITY

### Product Features

- Leak-proof & wear resistant design
- High quality sealed gas mechanism
- Stable & balanced movement
- Strong steel body with protective coating

YOUR  
FURNITURE'S  
BEST FRIEND.



# TELESCOPIC CHANNEL

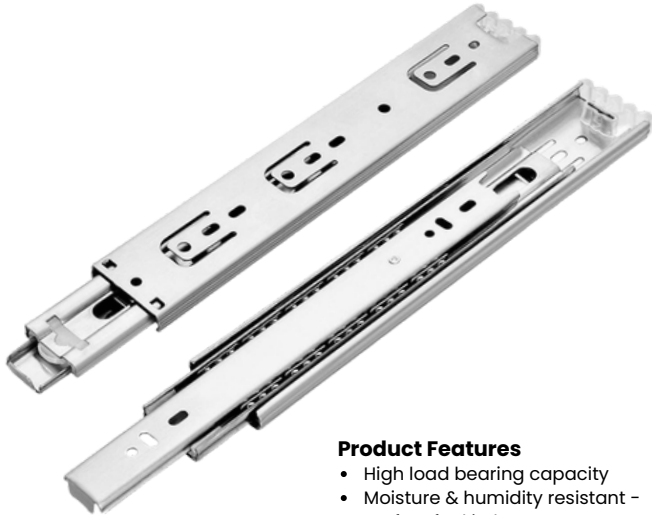


### Product Features

- High load bearing capacity
- Easy installation & accurate alignment
- Smooth & silent sliding operation
- Suitable for drawers, cabinets & furniture

## Black TeleScopic Channel

CODE	SIZE	MRP (₹)	QUANTITY
<b>AT01</b>	<b>10 Inches</b>	<b>400/-</b>	<b>10 Set/Box</b>
<b>AT02</b>	<b>12 Inches</b>	<b>480/-</b>	<b>10 Set/Box</b>
<b>AT03</b>	<b>14 Inches</b>	<b>560/-</b>	<b>10 Set/Box</b>
<b>AT04</b>	<b>16 Inches</b>	<b>640/-</b>	<b>10 Set/Box</b>
<b>AT05</b>	<b>18 Inches</b>	<b>720/-</b>	<b>10 Set/Box</b>
<b>AT06</b>	<b>20 Inches</b>	<b>800/-</b>	<b>10 Set/Box</b>



### Product Features

- High load bearing capacity
- Moisture & humidity resistant - perfect for kitchen areas
- Smooth & silent sliding operation
- Stainless Steel (SS) body - rust & corrosion resistant

## SS Telescopic Channel

CODE	SIZE	MRP (₹)	QUANTITY
<b>AT07</b>	<b>10 Inches</b>		
<b>AT08</b>	<b>12 Inches</b>		
<b>AT09</b>	<b>14 Inches</b>		
<b>AT10</b>	<b>16 Inches</b>		
<b>AT11</b>	<b>18 Inches</b>		
<b>AT12</b>	<b>20 Inches</b>		



### Product Features

- Silent Close. Premium Black.
- Smooth Motion with Soft Close Comfort
- Designed for Luxury Drawers
- Strength You Feel, Silence You Hear

## Black Soft Close Channel

CODE	SIZE	MRP (₹)	QUANTITY
<b>AT13</b>	<b>12 Inches</b>		
<b>AT14</b>	<b>14 Inches</b>		
<b>AT15</b>	<b>16 Inches</b>		
<b>AT16</b>	<b>18 Inches</b>		
<b>AT17</b>	<b>20 Inches</b>		

# TELESCOPIC CHANNEL



**Product Features**

- Compact Design. Powerful Performance.
- Smart Sliding for Smart Spaces
- Maximum Utility in Minimum Space
- Engineered for Precision Storage

## Pocket Channel

CODE	SIZE	MRP (₹)	QUANTITY
<b>AT18</b>	<b>12 Inches</b>		
<b>AT19</b>	<b>14 Inches</b>		
<b>AT20</b>	<b>16 Inches</b>		
<b>AT21</b>	<b>18 Inches</b>		
<b>AT22</b>	<b>20 Inches</b>		



**Product Features**

- Invisible Technology. Visible Quality.
- Precision Under Every Drawer
- Silent Strength, Premium Performance
- Designed for Luxury Interiors

## Quadro Channel

CODE	SIZE	MRP (₹)	QUANTITY
<b>AT23</b>	<b>10 Inches</b>		
<b>AT24</b>	<b>12 Inches</b>		
<b>AT25</b>	<b>14 Inches</b>		
<b>AT26</b>	<b>16 Inches</b>		
<b>AT27</b>	<b>18 Inches</b>		
<b>AT28</b>	<b>20 Inches</b>		





## FERROX DOOR MAGNET

CODE	COLOR	MRP (₹)	QUANTITY
<b>ADA01</b>	<b>Brown</b>		

### Product Features

- Strong Hold. Silent Close.
- Secure Closing Made Easy
- Small Part, Big Performance

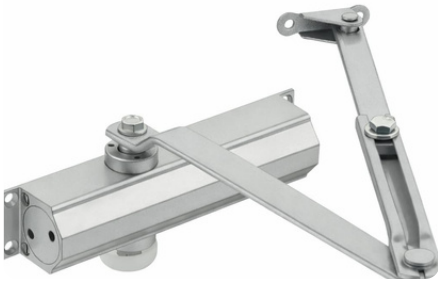


## Smart

CODE	CAPACITY	MRP (₹)	QUANTITY
<b>ADC72</b>	<b>80 Kg</b>	<b>1875/-</b>	<b>20</b>

### Product Features

- Smart Control. Strong Performance.
- Designed for Smooth & Silent Closing
- Power Meets Precision
- Reliable Closing for Everyday Use



## Stay 90 ( Hold Open )

CODE	CAPACITY	MRP (₹)	QUANTITY
<b>ADC73</b>	<b>90 Kg</b>	<b>1975/-</b>	<b>20</b>

### Product Features

- 90° Hold Open Function
- High-grade aluminum body
- Adjustable Closing Speed
- Powerful | Smooth | Reliable



## PELEMET MAX SILVER

CODE	CAPACITY	MRP (₹)	QUANTITY
<b>ADC74</b>	<b>110 Kg</b>	<b>3199/-</b>	<b>20</b>

### Product Features

- High Strength Arm Mechanism
- Maximum Power for Heavy Doors
- Robust aluminium body
- Built for Strength. Designed for Control



## PELMET MAX BLACK

CODE	CAPACITY	MRP (₹)	QUANTITY
<b>ADC75</b>	<b>110 Kg</b>	<b>3699/-</b>	<b>20</b>

### Product Features

- 90° Hold Open Function
- High-grade aluminum body
- Adjustable Closing Speed
- Powerful | Smooth | Reliable



## PELMET MAX ANTIQUE

CODE	CAPACITY	MRP (₹)	QUANTITY
<b>ADC76</b>	<b>110 Kg</b>	<b>3899/-</b>	<b>20</b>

### Product Features

- 90° Hold Open Function
- High-grade aluminum body
- Adjustable Closing Speed
- Powerful | Smooth | Reliable





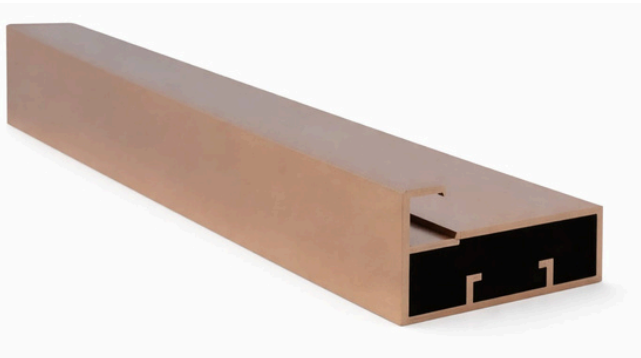
## G PROFILE

CODE	FINISH	LENGTH	MRP (₹)	QUANTITY
<b>AP01</b>	<b>BLACK MATT</b>	<b>3 MTR</b>		<b>10 Pc/Box</b>
<b>AP02</b>	<b>ROSE GOLD</b>	<b>3 MTR</b>		<b>10 Pc/Box</b>



## J PROFILE

CODE	FINISH	LENGTH	MRP (₹)	QUANTITY
<b>AP03</b>	<b>BLACK MATT</b>	<b>3 MTR</b>		<b>10 Pc/Box</b>
<b>AP04</b>	<b>ROSE GOLD</b>	<b>3 MTR</b>		<b>10 Pc/Box</b>



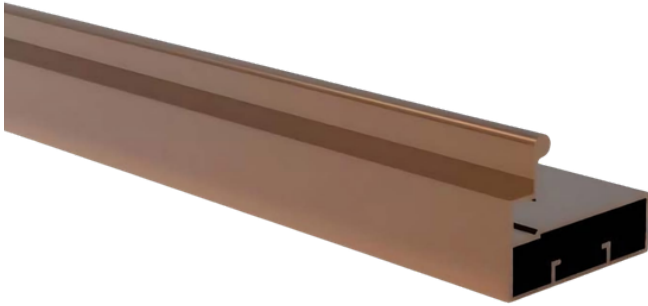
## GLASS FRAME PROFILE ( 45 MM )

CODE	FINISH	LENGTH	MRP (₹)	QUANTITY
<b>AP05</b>	<b>BLACK MATT</b>	<b>3 MTR</b>		<b>10 Pc/Box</b>
<b>AP06</b>	<b>ROSE GOLD</b>	<b>3 MTR</b>		<b>10 Pc/Box</b>



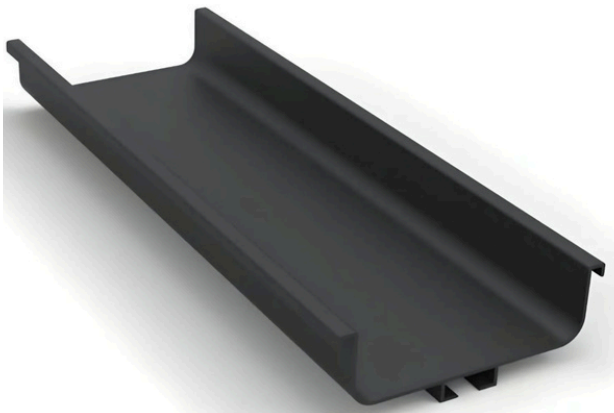
## GLASS HANDLE PROFILE (68MM)

CODE	FINISH	LENGTH	MRP (₹)	QUANTITY
<b>AP07</b>	<b>BLACK MATT</b>	<b>3 MTR</b>		<b>10 Pc/Box</b>
<b>AP08</b>	<b>ROSE GOLD</b>	<b>3 MTR</b>		<b>10 Pc/Box</b>



## NEW GLASS HANDLE PROFILE (68MM)

CODE	FINISH	LENGTH	MRP (₹)	QUANTITY
<b>AP09</b>	<b>BLACK MATT</b>	<b>3 MTR</b>		<b>10 Pc/Box</b>
<b>AP10</b>	<b>ROSE GOLD</b>	<b>3 MTR</b>		<b>10 Pc/Box</b>



## C GOLA PROFILE

CODE	FINISH	LENGTH	MRP (₹)	QUANTITY
<b>AP11</b>	<b>BLACK MATT</b>	<b>3 MTR</b>		<b>10 Pc/Box</b>
<b>AP12</b>	<b>ROSE GOLD</b>	<b>3 MTR</b>		<b>10 Pc/Box</b>

## Product Features

- Made from high-grade aluminium
- Premium Profiles for Premium Furniture
- Smooth Edges for Comfortable Grip
- Scratch & corrosion resistant



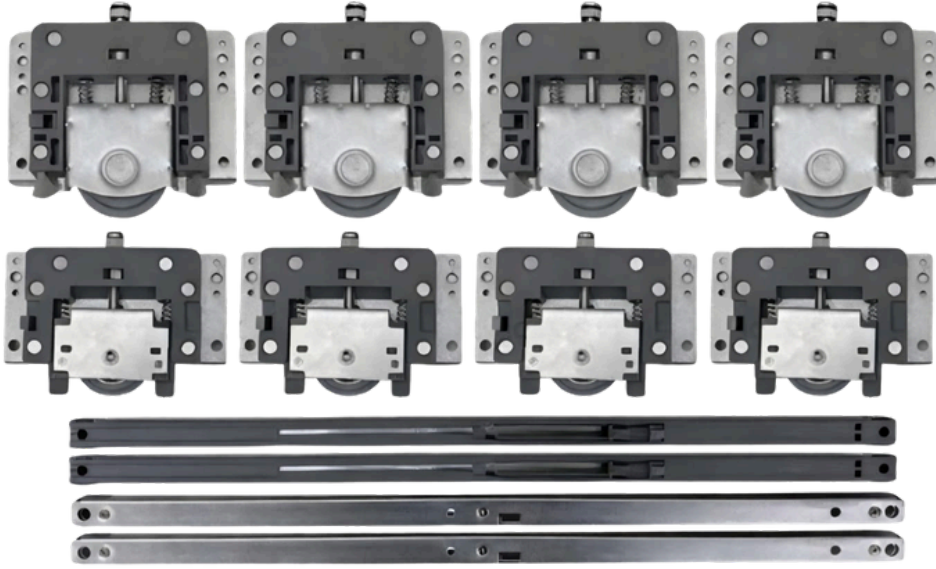
## GLASS PROFILE CONNECTOR

CODE	MATERIAL	MRP (₹)	QUANTITY
<b>ADA01</b>	<b>Zinc</b>	<b>120/-</b>	<b>100 Set/Box</b>

### Product Features

- Precision-Cut Design for perfect right-angle alignment
- Multiple Countersunk Screw Holes for firm and flush fixing
- Corrosion-Resistant Finish for long service life
- Smooth Edges & Uniform Thickness for safe handling





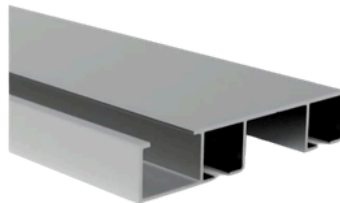
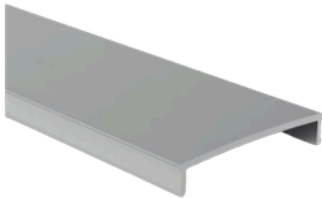
**SOFT  
CLOSE**

## Sliding Sky Rollar

CODE	SIZE	MRP (₹)	QUANTITY
<b>ASR01</b>	<b>1set(2Door)</b>	<b>1820/-</b>	<b>15Set/Box</b>

### Product Features

- Smooth & Noise-Free Sliding Movement
- Heavy Duty Sliding Roller System
- 3 Side Metal Long Damper
- Precision You Can Feel



## Sliding Sky Track (Double Track)

CODE	SIZE	MRP (₹)	QUANTITY
<b>ASR02</b>	<b>2.45 Mtr.</b>	<b>2800/-</b>	<b>10Set/Box</b>
<b>ASR03</b>	<b>4 Mtr.</b>	<b>4550/-</b>	<b>10Set/Box</b>

### Product Features

- Heavy-Duty Aluminium Profile
- Friction-free sliding
- Premium surface finish
- Modular furniture systems



# WARDROBE COLLECTION





## TROUSER RACK

CODE	COLOR	MRP (₹)	QUANTITY
<b>AWF01</b>	<b>Mocha Brown</b>		<b>1 Pc/Box</b>

### Product Features

- Aluminum frame + adjustable rods
- Soft close 18" Quadro
- Suitable for hanging trousers



## JEWELLERY RACK

CODE	COLOR	MRP (₹)	QUANTITY
<b>AWF02</b>	<b>Mocha Brown</b>		<b>1 Pc/Box</b>

### Product Features

- Leather Tray + Aluminium Frame
- Soft Close 18" Quadro
- Suitable For Watch Jewellery



## WARDROBE LAUNDRY BASKET

CODE	COLOR	MRP (₹)	QUANTITY
<b>AWF03</b>	<b>MOCHA BROWN</b>		<b>1 Pc/Box</b>

### Product Features

- Aluminium Frame
- Soft Close 18" Quadro
- Suitable For Clothes And Garments



## LUXURY LEATHER BASKET

CODE	COLOR	MRP (₹)	QUANTITY
<b>AWF04</b>	<b>Mocha Brown</b>		<b>1 Pc/Box</b>

### Product Features

- Aluminium Frame
- Soft Close 18" Quadro
- Suitable For Clothes And Garments





## SOFT CLOSE SHOES RACK

CODE	COLOR	MRP (₹)	QUANTITY
<b>AWF05</b>	<b>Mocha Brown</b>		<b>1 Pc/Box</b>

### Product Features

- Iron Basket + Aluminium Frame
- Soft Close 18" Quadro
- Suitable For Footwears 2 Shelf
- Width – 900 Mm



## TOP V TROUSER PULLOUT

CODE	COLOR	MRP (₹)	QUANTITY
<b>AWF06</b>	<b>Mocha Brown</b>		<b>1 Pc/Box</b>

### Product Features

- Aluminium Frame
- Soft Close 18" Quadro
- Width – 900 Mm



## UNDERGARMENT RACK

CODE	COLOR	MRP (₹)	QUANTITY
<b>AWF07</b>	<b>Mocha Brown</b>		<b>1 Pc/Box</b>

### Product Features

- Leather Tray + Aluminium Frame
- Soft Close 18" Quadro
- Suitable For Watch + Jewellery



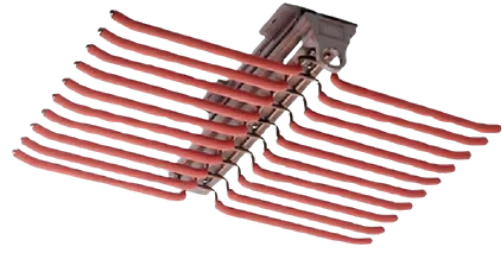
## SIDE MOUNT SINGLE PULLOUT

CODE	COLOR	MRP (₹)	QUANTITY
<b>AWF08</b>	<b>Mocha Brown</b>		<b>1 Pc/Box</b>

### Product Features

- Iron Basket + Aluminium Frame
- Soft Close 18" Quadro
- Suitable For Trouser And Garment



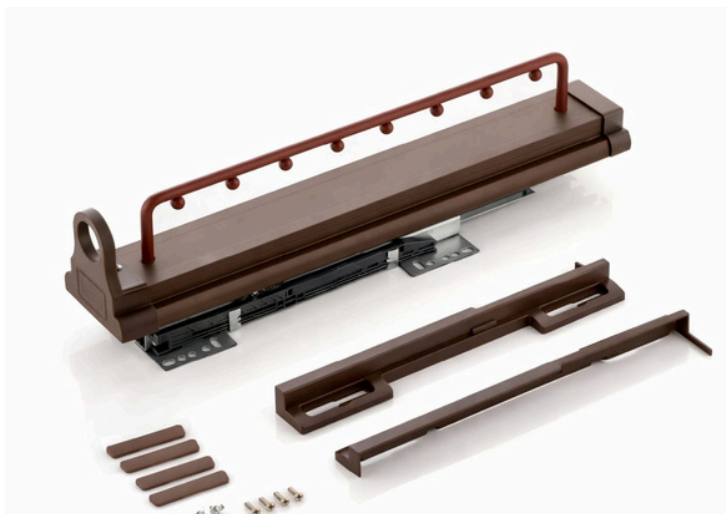


## TOP MOUNT DOUBLE PULLOUT

CODE	COLOR	MRP (₹)	QUANTITY
<b>AWF09</b>	<b>Mocha Brown</b>		<b>1 Pc/Box</b>

### Product Features

- Iron Basket + Aluminium Frame
- Soft Close 18" Quadro
- Suitable For Trouser And Garment



## TOP CLOTH PULLOUT

CODE	COLOR	MRP (₹)	QUANTITY
<b>AWF10</b>	<b>Mocha Brown</b>		

### Product Features

- 8 Bead Hanging Aluminium Frame
- Soft Close 18" Quadro
- Suitable For Trouser And Garment



## CLOTH LIFTER

CODE	COLOR	MRP (₹)	QUANTITY
<b>AWF11</b>	<b>Mocha Brown</b>		<b>1 Pc/Box</b>

### Product Features

- Soft Closing
- Load Capacity 12 To 13 Kg
- Aluminium Handles



## IRON BOARD

CODE	COLOR	MRP (₹)	QUANTITY
<b>AWF12</b>	<b>Mocha Brown</b>		<b>1 Pc/Box</b>

### Product Features

- Rotating Iron Board
- Suitable For Trouser And Garment



## REVOLVING SHOE RACK

CODE	COLOR	MRP (₹)	QUANTITY
<b>AWF13</b>	<b>Mocha Brown</b>		<b>1 Pc/Box</b>

### Product Features

- 360° Smooth Rotating Mechanism for effortless access
- 12-Layer High-Capacity Design for maximum shoe storage
- Space-Saving Vertical Structure
- Strong Metal Frame for long-lasting durability
- Anti-Slip Shoe Trays to keep footwear secure

*Thank You*



**AMANA**

YOUR TRUST OUR TOP PRIORITY

---

**GERMAN QUALITY  
HARDWARE**

**ASHOKA SALES, INDIA**

+91 999 6651074

[info@amanahardware.com](mailto:info@amanahardware.com)

[www.amanahardware.com](http://www.amanahardware.com)